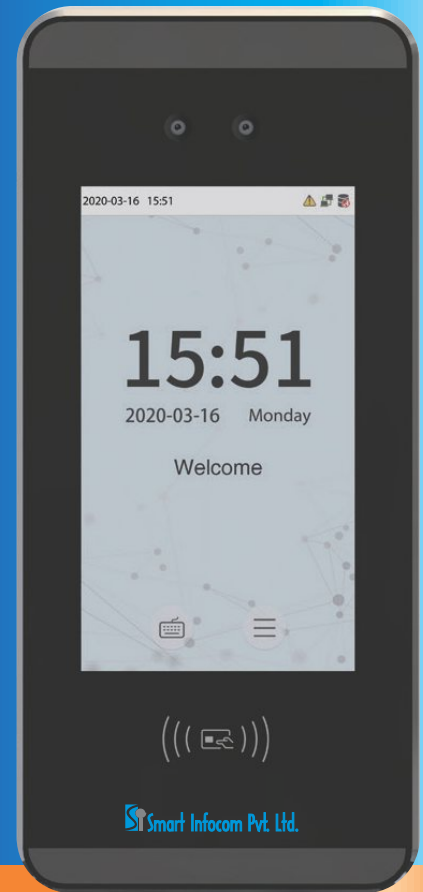


# SMARTFACE JAGUAR Mini

Linux-Based Access control and Time & Attendance Terminal with Visible Light Facial recognition



Proactive Facial Recognition



New Height of Anti-Spoofing



Speedy Recognition



Wide Pose Angle Acceptance



Touchless for Better Hygiene

## Features

Visible Light Facial Recognition

Anti-spoofing algorithm against print attack(laser, color and B/W photos), videos attack and 3D mask attack

Multiple Verifications: Face / Card / Password

Multiple card modules:

125KHz ID card(EM) / 13.56MHz IC card (MF)

3,000 face templates capacity

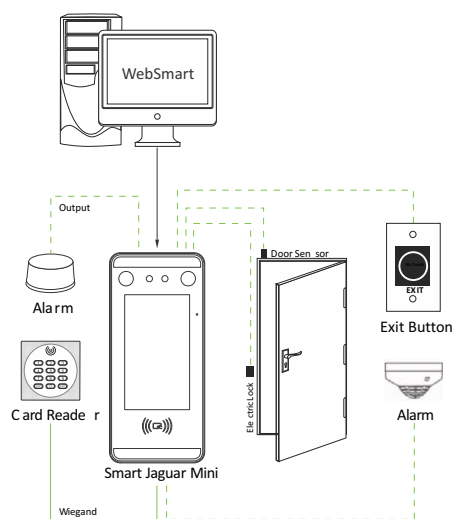
## Recognition distance up to 2m long and extra wide angle recognition

The recognition distance has been greatly extended up to 2 meters long, which significantly improves maximum traffic rate. While most of algorithms only support 15-degree angle facial recognition, Smart Jaguar Mini supports 30-degree angle facial recognition

# Specification

Display	5-inch Touch Screen
Face Capacity	3,000
Card Capacity	3,000
Transactions	150,000
Operation System	Linux
Standard Functions	ID Card, ADMS, T9 Input, DST, Camera, 9 digit user ID, Access Levels, Groups, Holidays, Anti-passback, Record Query, Tamper Switch Alarm, Multiple Verify Modes
Hardware	900MHZ Dual Core CPU Memory 512MB RAM / 8G ROM 2MP WDR Low Light Camera Adjustable Light Brightness LED
Communication	TCP/IP, WIFI, Wiegand input/output, RS485
Access Control Interface	3rd Party Electric Lock, Door Sensor, Exit Button, Alarm output, Auxiliary Input
Optional Functions	13.56MHz IC Card / WiFi
Face Recongntion Speed	≤1s
Biometrics Algorithms	VX5.8 / VX12.0
Power Supply	12V 3A
Working Humidity	10%-90%
Working Temperature	-10 °C- 45 °C
Dimensios (W*H*D)	91.93*202.93*21.5mm
Supported Software	WebSmart

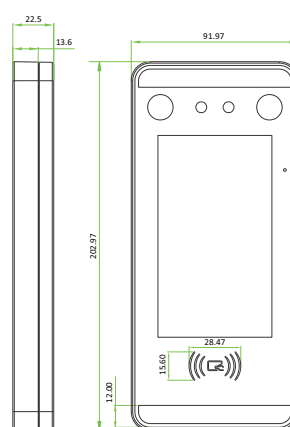
## Coniguration:



## Optional Accessories:



## Dimensions(mm)



Smart Infocom Pvt. Ltd.